



Oxenhope C of E Primary School

**RECEPTION TEAM:**  
Mrs Parker  
Mrs Jennings  
Miss Hopkinson (Friday)

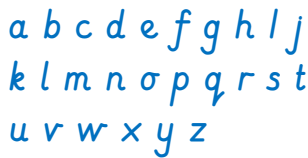
# Autumn 1

Our new topic for this half-term is:  
**HOME IS WHERE THE HEART IS**  
We will be finding out about our homes and the homes of others including animals.  
If you could send in a photo of your home or email one to the office that would be great.  
We will be investigating which materials different homes are made from and why.



## Writing

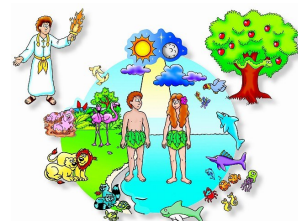
We will practise forming our letters daily during phonics lessons.  
We will be focusing on writing the letters in our names.  
We will send home a sheet detailing the correct letter formation expected



## RE

Our theme for collective worship this term is love. In our R.E. lessons we will be discussing the question "Why is the word God so important to Christians?"

We will be celebrating Harvest in the church on Thursday 16th September.



# ELMER Class



## Baseline Assessments

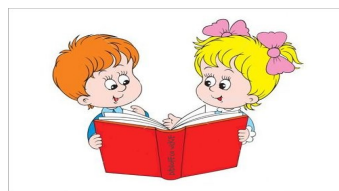
We will be completing a baseline assessment on the children when they have completed their transition. This is a statutory government requirement. This will then help us understand where your child is at and what they need next.

## PSED

We will be having lots of circle times to discuss worries and feelings to ensure that the children feel supported and safe in the classroom. In the first term, we will be focusing on supporting the children develop friendships in the class and helping them share and compromise. If you have any worries about your child please send us a message or SeeSaw.

## READING

We will be sending home one reading book a week. Please read with your child every day, if you can. This doesn't have to be for long! Books will be sent out on a Wednesday and must be returned the following Wednesday. Please do not bring reading books on any other day. We will still be reading with children in



## P.E.

P.E. will start in two weeks time. We will inform you of the day and your child can come to school in their PE kit. Please see the school uniform list for details.



Please can we ask that your child has spare clothes at school. These must be in a red pump bag and hung on their coat peg. We do not have room for rucksacks in the cloakroom.



The red school book bags or the plastic one we provided can be brought and put in the box provided. Once again these will not fit on the coat pegs.



## Important Information

We will be sending home a grid of activities you can complete at home with your child. We are asking that homework is not brought into school and instead ask that you record your child's learning on their SeeSaw account. If you need help with this, please message Mrs Parker.

As the weather is getting **wet** and **cold** please make sure your child comes to school in a **suitable coat** and if needed a **woolly hat, scarf and gloves**. Please make sure they have your child's name in them. **No umbrellas please**.

We play out in all weathers and visit the nature area for outdoor learning, so please make sure your child has a pair of wellies, with their name in them in school.

I will be adding your child to Tapestry, so please check your emails to activate your account. We use Tapestry to record observations of learning and it builds up an online learning journal of their time in school.

## SeeSaw

Please ensure you have access to SeeSaw and are checking it daily. We will post updates and important messages on there and you can message us if you need to tell us something or have a question.